

BRG9 ELITE

OWNER'S MANUAL



CAUTION: READ THE INSTRUCTIONS AND WARNINGS IN THIS MANUAL CAREFULLY BEFORE USING THIS FIREARM. DO NOT DISCARD THIS MANUAL.

This instruction manual should always accompany this firearm and be transferred with it upon ownership, or when the firearm is loaned or presented to another person.



**MANUFACTURED IN TURKEY
QUALITY MANAGEMENT SYSTEM
TS EN ISO 9001:2015 CERTIFIED**

All pictures, photos, and definitions in this manual are provided only for information purposes. The manufacturer reserves the right to apply changes to any model at any time without prior notice as deemed necessary for improving the products or in line with any manufacturing or commercial requirements.

CONTENTS

1. SAFETY WARNINGS.....	1
2. BASIC RULES OF SAFE FIREARMS HANDLING.....	4
3. PRODUCT & FEATURES IDENTIFICATION.....	7
4. PUTTING YOUR PRODUCT INTO SERVICE	13
5. SAFETY FEATURES.....	16
6. MAINTENANCE & CLEANING	18
7. EXPLODED VIEW & PART LIST.....	24
8. PRODUCT REGISTRATION & WARRANTY.....	29

[This page intentionally left blank.]

1. SAFETY WARNINGS

Read the instructions and warnings in this manual carefully before handling BRG products for any purpose or reason. Prior to handling BRG products you must be familiar with and follow the information provided in this manual. Please read the instructions for safety and use thoroughly and carefully before handling the firearm. Failure to heed any of these warnings may result in death or serious injury to you or others, as well as severe damage to the firearm or other property. If you need any further information please consult your dealer or the manufacturer.

Please observe all local, state, and federal laws governing the purchase, handling, and use of firearms.

All firearms are dangerous. Therefore, this product is sold to you provided that you comply with all instructions for use. This firearm is sold by BRG with the specific understanding that BRG shall not be responsible in any manner whatsoever for malfunctioning of the firearm, physical injury or property damage resulting in whole or in part from:

- criminal or negligent discharge
- improper, careless, or abusive handling
- unauthorized modifications or parts replacement
- defective, improper, hand-loaded, or reloaded ammunition
- corrosion
- neglect
- other influences beyond our direct and immediate control.

This limitation applies regardless of whether liability is asserted on the basis of contract, negligence, or strict liability (including any failure to warn). Under no circumstance shall BRG be liable for incidental or consequential damages, such as loss of use of property, commercial loss, and loss of earnings or profits.

1.1 ABUSIVE HANDLING

This pistol is designed and manufactured with effective mechanical safeties. However, exposure to abusive conditions may impair the effectiveness of the safety mechanisms and cause them to fail to work as designed. Do not subject your pistol to any type of abusive handling, such as dropping the pistol or allowing it to sustain an impact. If your pistol does suffer an abusive event, do not attempt to use the firearm. Keep the firearm pointed in a safe direction, unload and clear the firearm immediately, and have it inspected by a certified gunsmith prior to using the firearm.

1.2 DISASSEMBLY

Do not attempt to disassemble your firearm beyond the point explained in this manual. Disassembly beyond the instructions in this manual should only be performed by a certified gunsmith. Failure to comply with this warning will void your warranty and may result in improper functioning, damage to the firearm, serious injury, or death.

1.3 ALTERATIONS

This firearm was designed to function properly in its original condition. Unauthorized alterations can make it unsafe. Do not alter any part or add or substitute any parts not manufactured by BRG. Alteration or addition of unauthorized parts may result in improper functioning, damage to the firearm, and serious injury or death.

1.4 ACCESSORIES

It is your responsibility to ensure all accessories, such as holsters and firearm mounted lights are compatible with this firearm and that the accessories do not interfere with the safe operation and handling of the firearm. If you are lawfully carrying the firearm concealed, you must ensure that the holster you choose is made for your particular firearm and designed for the type of carry in which you intend to engage.

1.5 AMMUNITION

Use only high-quality, original, factory-manufactured ammunition. Do not use cartridges that are dirty, wet, corroded, bent, or damaged. Do not oil cartridges. Do not spray aerosol-type lubricants, preservatives, or cleaners directly onto cartridges or where excess spray may flow into contact with cartridges. Lubricant or other foreign matter on cartridges can cause potentially dangerous ammunition malfunctions. Only use ammunition of the caliber for which your firearm is chambered.

The use of reloaded, "remanufactured" hand-loaded, or other non-standard ammunition voids all warranties. Reloading is a science and improperly loaded ammunition can be extremely dangerous. Severe damage to the firearm and serious injury to the shooter or to others may result. Always use ammunition that complies with the industry performance standards established by the Sporting Arms and Ammunition Manufacturers' Institute, Inc. (SAAMI) or ammunition manufactured to military specifications.

Death, serious injury, and damage can result from the use of wrong ammunition, bore obstructions, powder overloads, or incorrect cartridge components.

1.6 PROTECT YOUR EYES AND EARS

Always wear eye protection that meets the requirements of American National Standards Institute (ANSI) Z87.1 and earplugs or " earmuff" type hearing protectors whenever you are shooting. Always make certain that persons close to you are similarly protected. Unprotected eyes may be injured by powder, gas, carbon residue, lubricant, metallic particles, or similar debris that may emanate occasionally from any firearm in normal use. Without proper hearing protection, repeated exposure to shooting noise may lead to cumulative, permanent hearing loss.

1.7 TRANSPORTING

When transporting your firearm, be sure the firearm is unloaded and cleared. It is your responsibility to familiarize yourself with the laws of any state you will be travelling through with your firearm.

1.8 STORAGE

Certain states require that specific regulations be printed in the operator manuals. Those state-by-state regulations and warnings are listed in Section 10 of this manual.

The only safe way to store your firearm is unloaded, cleared, and secure. Safe and secure storage is one of your most important responsibilities. Store your unloaded firearm separate from your ammunition and in places inaccessible to children and unauthorized persons.

1.9 SHIPPING

Before shipping any firearm, be absolutely certain that the firearm and its magazines are unloaded and cleared. DO NOT ship ammunition with a firearm. Failure to follow this warning could result in unintentional discharge, causing severe injury or death, or property damage.

1.10 LEAD EXPOSURE

Discharging firearms in poorly ventilated areas, cleaning firearms, or handling ammunition may result in exposure to lead and other substances known to the state of California to cause birth defects, reproductive harm, and other serious physical injury. Maintain adequate ventilation at all times. Wash hands thoroughly after exposure.

NOTICE: All pictures, photos, and definitions in this manual are provided only for information purposes. The manufacturer reserves the right to apply changes to any model at any time without prior notice as deemed necessary for improving the products or in line with any manufacturing or commercial requirements.

2. BASIC RULES OF SAFE FIREARMS HANDLING

2.1 ALWAYS KEEP YOUR FIREARM POINTED IN A SAFE DIRECTION

Never point a firearm at yourself or others. This is particularly important when loading or unloading the firearm. Always be aware of what is behind your target. Whether you miss or hit your target, it is your responsibility to ensure your shot will not cause unexpected injuries or damages.



2.2 ALWAYS TREAT EVERY FIREARM AS IF IT IS LOADED

Do not take anyone's word that the firearm is unloaded - always check for yourself. Assume your firearm is loaded and ready to fire unless you have visually checked that the firearm is unloaded.

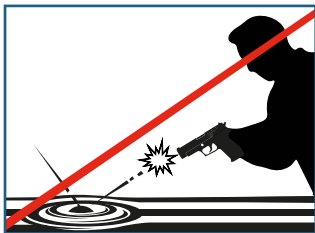


2.3 KEEP FIREARM OUT OF REACH OF CHILDREN

It is your responsibility to ensure that your firearm is not accessible to children and other unauthorized persons. It is highly recommended that you store your firearm unloaded and secured with ammunition stored separately. This will minimize the risk of accidents involving children and unauthorized persons.

2.4 NEVER SHOOT AT HARD SURFACES OR WATER

Shooting at water or hard surfaces can cause changes in the direction of the bullet, or ricochet, which may result in death, serious injury, and/or property damage.

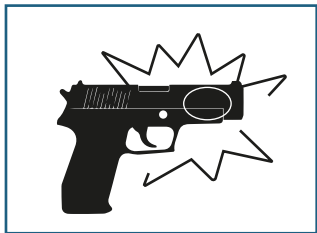


2.5 NEVER USE ALCOHOL OR DRUGS THAT MAY IMPAIR MENTAL OR PHYSICAL ABILITY WHILE SHOOTING/HANDLING FIREARM



Do not use your firearm if you are impaired by alcohol, drugs, and/or medications that will hinder your physical and mental abilities.

2.6 FOLLOW PROPER MAINTENANCE PROCEDURES FOR YOUR FIREARM



In order to prevent accumulation of dirt or dust on operating parts, store your firearm in its original case once properly cleaned. Clean and lubricate your firearm after every use following the instructions found later in this manual in order to avoid any corrosion, barrel damage, and/or fouling.

Before loading the firearm, always check to ensure the barrel is free from any

obstructions such as dirt, mud, oil, ammunition, or ammunition residuals. Shooting against an obstruction can cause an increase in pressure and may damage your firearm and cause injury to yourself and others.

If the operation of your handgun has changed in relation to the way it sounds, stop firing, make sure the firearm is pointed in a safe direction, and unload the firearm. Check the chamber and barrel bore for any failure. If your handgun is not functioning properly in any way, discontinue use and have it inspected by a certified gunsmith.

2.7 USE PROPER AMMUNITION

Using incorrect types or calibers of ammunition may cause the firearm to jam. Only use factory-loaded ammunition that is newly manufactured within industrial specifications. Ensure all cartridges used are compatible with the caliber and type of your firearm.

2.8 ALWAYS WEAR SAFETY GLASSES AND HEARING PROTECTION SPECIFIED FOR FIREARM USE

A shooter should always wear impact resistant safety glasses and hearing protection when using any firearms to prevent hearing damage and vision loss.



2.9 ENSURE THAT YOU HAVE A COMPLETE UNDERSTANDING OF THE SAFETY FEATURES OF YOUR FIREARM

It is your responsibility to make yourself familiar with and utilize the safety features of your firearm. However, you should never rely on solely on these safety features to prevent accidents. The best way to prevent accidents is to follow the rules for safety and safe handling procedures defined in the product manual. Always keep your firearm pointed in a safe direction!

2.10 ENSURE BARREL IS CLEAR OF OBSTRUCTIONS

Always ensure the barrel of the firearm is clear of obstructions before firing. Never attempt to clear a jammed barrel by firing another round. Shooting against an obstruction can cause an increase in pressure and may damage your firearm and cause serious injury to yourself and others.

2.11 ALLOW ONLY AUTHORIZED/QUALIFIED GUNSMITHS TO UNDERTAKE REPAIR PROCEDURES

Do not attempt to repair damage or defects to the firearm. Only authorized/qualified gunsmiths should under repair procedures on the firearm. Do not make mechanical modifications to any part of the firearm. This can be dangerous. Doing so will void the warranty.

3. PRODUCT & FEATURES IDENTIFICATION

3.1 SUPPLIED COMPONENTS

The package supplied includes;

- 1 Firearm Case
- 1 Firearm
- 2 Magazines
- 1 Magazine Loader
- 1 Owner's Manual
- 3 Sizes of Interchangeable Backstraps (S, M, L)
- 1 Trigger Lock
- 1 Maintenance Kit

Note: Contents may change at any time.



3.2 FEATURES

BRG firearms are being manufactured with advanced technology based on experiences gained by producing them for shooting, police, and military services. This firearm utilizes a mechanical locked breech system and a semi-automatic, single-action firing system. The automatic striker safety and trigger safety allow for safe and secure carry of the firearm. The ergonomic pistol grip allows you to carry your firearm in comfort. The build and function of the firearm allow for precision sighting.



FIRING PIN SAFETY



ACCESSORY RAIL



SUITABLE FOR RIGHT AND LEFT HAND USE



STEEL MAGAZINE

STRIKER STATUS
INDICATOR



LOADED CHAMBER
INDICATOR





Note: BRG reserves the right to amend the content of model without any notice.

MODEL	BRG9 ELITE – 4 Inch	BRG9 ELITE – 5 Inch
CALIBER	9x19 mm	9x19 mm
OPERATING SYSTEM	Single Action	Single Action
CAPACITY	16+1	16+1
BARREL LENGTH	102.6 mm / 4 in	127 mm / 5 in
OVERALL LENGTH	187.5 mm / 7.36 in	210.96 / 8.3 in
WIDTH	34mm / 1.4 in	34mm / 1.34 in
WEIGHT(WITHOUT MAGAZINE)	747 gr / 26.35 oz	863 gr / 30.44 oz
WEIGHT (WITH MAGAZINE)	837 gr / 29.52 oz	952 gr / 33.58 oz
FRAME	Polymer	Polymer
SLIDE	Alloyed Forged Steel	Alloyed Forged Steel
BARREL	Alloyed Forged Steel	Alloyed Forged Steel
REAR SIGHT	Dovetail	Dovetail
FRONT SIGHT	Dovetail	Dovetail

4. PUTTING YOUR PRODUCT INTO SERVICE

4.1 PRELIMINARY PREPARATION

Firearms are generally protected with a light coating of gun oil. Before using your firearm, clean your firearm and make sure the barrel does not have any excess oil. If there is excess oil, remove it by using a bore mop or patches to push through the barrel.

4.1.1 INSPECTING YOUR FIREARM

- a) Depress the magazine release and remove the magazine.
- b) Pull the slide to the rear, check to see that the chamber is clear and the bore is not obstructed.
- c) Grip the firearm firmly, depressing the grip safety, and pull the trigger. Your striker should release during this step.



4.2 AMMUNITION

- Use only quality factory ammunition.
- Make sure that the caliber of the ammunition is compatible with your firearm.
- Using over-pressured cartridges or hand loads may not only cause damage to the firearm, which will void the warranty, but also can cause injury or death to yourself and/or bystanders.

4.3 FIRING

4.3.1 SAFETY CHECKS BEFORE FIRING

- Always keep the firearm pointed in a safe direction.
- Keep your finger off the trigger and out of the trigger guard until you're ready to fire.
- Before loading, be sure that any excess oil on the firearm is removed. Check to see that the chamber is clear (by pulling the slide to the rear) and the bore is not obstructed.
- It is not recommended that you load or unload your firearm anywhere other than a safe and designated area.
- Do not rely on the mechanical safety systems. Be sure you have read the manual carefully and understand it completely.

4.3.2 LOADING YOUR MAGAZINE

- a) Hold the magazine with your non-dominant hand.
- b) With your dominant hand, place a cartridge on the follower in front of the lips, press down, and slide the cartridge completely back under the lips.
- c) Repeat until the magazine is fully loaded.



⚠ WARNING: While loading cartridges, be careful to not damage the magazine lips. The number of cartridges currently loaded can be observed by holes on the rear side of magazine. Do not try to force more than the maximum indicated rounds into the magazine. Crushed and crooked cartridges can affect the function. Inspect cartridges prior to loading.

4.4 UNLOADING YOUR FIREARM

- Point the muzzle of the firearm in a safe direction.
- Depress the magazine release and remove the magazine.
- Pulling rearward on the slide will eject the live round from the chamber.
- While holding the slide in the rearward position, engage the slide release to lock open.
- Visually check the chamber to be sure it is empty.



5. SAFETY FEATURES

5.1 LOADED CHAMBER INDICATOR



The BRG9 Elite includes a loaded chamber indicator. The loaded chamber indicator will be raised above the barrel when a cartridge is in the chamber.

5.2 STRIKER STATUS INDICATOR / STRIKER SAFETY



The BRG9 Elite includes a striker status indicator. When the gun is cocked, the striker status indicator pin will protrude out of the slide. This indicates that the firearm is cocked and ready to fire if a round is loaded into the chamber. The firearm should always be treated as if it is loaded. Always keep your firearm pointed in a safe direction. The striker safety will prevent the firearm from discharging unless the trigger is pulled.

5.3 TRIGGER SAFETY



The BRG9 Elite includes a trigger safety. The trigger safety is a lever incorporated into the trigger. The trigger safety will prevent the trigger from being pulled unless the trigger safety is fully depressed. It is designed to prevent the firearm from firing if it is dropped or the trigger is accidentally depressed from the side.

5.4 GRIP SAFETY



The BRG9 Elite includes a grip safety. The grip safety is located at the top rear of the pistol grip. The firearm is designed not to fire unless the grip safety is fully depressed. The slide cannot be pulled to the rear unless the grip safety is deactivated.

⚠ WARNING: The safety features of the BRG9 Elite are intended to prevent accidental discharge of the firearm. However, safe firearm handling practices should always be followed. Always treat the firearm as if it is loaded and keep it pointed in a safe direction.

6. MAINTENANCE & CLEANING

6.1 MAINTENANCE AND CLEANING OF YOUR FIREARM

It is important to properly maintain your firearm in order to keep it in good working condition. You should clean and lubricate the firearm regularly, including after every use. This will prevent corrosion and remove dust, dirt, and debris which can affect the function of the firearm.

Read and follow the manufacturer's warnings before using solvents and cleaners. Remember that you are responsible for the proper care and maintenance of your firearm.

- Always ensure the firearm is unloaded before beginning cleaning.
- In order to keep the firearm as efficient as possible it must be kept clean and lubricated with good quality gun oil to prevent corrosion. This is especially necessary after use.
- It is important to clean all powder, lead, and other debris from the barrel and other adjacent parts using an appropriate bristle brush. Once cleaned, properly lubricate the firearm using the instructions on the following pages.

SLIDE



FRAME



BARREL



RECOIL SPRING SYSTEM



MAGAZINE

6.2 MAINTENANCE AND CLEANING KIT

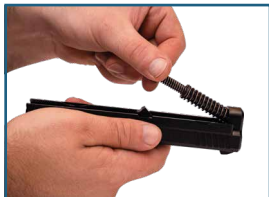
Maintenance and Cleaning Kit contains the following items:

- Utility Brush
- Nylon Brush
- Wire Brush
- Microfiber Brush
- Lubricant or gun oil
- Cleaning Patch

6.3 CLEANING YOUR FIREARM

6.3.1 DISASSEMBLY

1. Remove the magazine by pushing the magazine release and pulling the magazine out of the frame. Rack the slide, utilizing the slide stop lever. Ensure both the chamber and barrel are clear.
2. Rotate the disassembly lever clockwise as far as it will go. Close the slide using the slide stop lever.
3. Once the slide is closed, pull the trigger as if firing a bullet. This will release the slide. Pull it off from the front of the frame.
4. Depress recoil spring and gently lift to remove it from the slide assembly.
5. Grasp the barrel lug, lifting it up and to the rear to remove it from the slide assembly.



6.3.2 CLEANING THE BARREL

1. Dampen the microfiber brush with gun cleaning solvent and push it through the barrel from the chamber end several times.
2. Dampen a cleaning brush with gun cleaning solvent and push it through the barrel from the chamber end. Push it back and forth several times to remove any fouling and burned powder.



3. Dampen the microfiber brush with gun cleaning solvent and push it through the barrel from the chamber end. If it is not clean, repeat steps 1 and 2 until the patch is clean after being pushed through the barrel.
4. Lightly dampen the microfiber brush with gun oil or lubricant and push it through the barrel from the chamber end to lightly oil the barrel.
5. Dampen the utility brush with gun cleaning solvent and thoroughly brush the outside of the barrel to remove any dirt or residue.
6. Using a cleaning patch, wipe the outside of the barrel dry. If the patch is not clean, repeat steps 5 and 6 until the patch remains clean.
7. Lightly lubricate the outside of the barrel by rubbing it with a cleaning patch with a few drops of gun oil or lubricant.



LUBRICATE WITH GUN OIL

6.3.3 CLEANING THE SLIDE

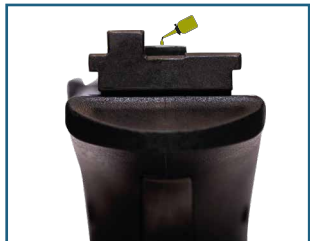
1. Dampen the utility brush with gun cleaning solvent and scrub the slide rails, breech face, and the area under the extractor claw.
2. Using a cleaning patch, wipe down the areas cleaned in the previous step. If the patch is not clean, repeat steps 1 and 2 until it remains clean.
3. Lightly lubricate the slides rails, breech face, and the area under the extractor claw by rubbing it with a cleaning patch with a few drops of gun oil or lubricant.



LUBRICATE WITH GUN OIL

6.3.4 CLEANING THE FRAME

1. Dampen a cleaning patch with gun cleaning solvent and wipe clean the exposed parts of the frame.
2. Using a cleaning patch, wipe down the exposed parts of the frame. If the patch is not clean, repeat steps 1 and 2 until the patch remains clean.
3. Lightly lubricate the guide rails and the backside of the trigger bar with a cleaning patch with a few drops of gun oil or lubricant.



6.3.5 CLEANING THE RECOIL SPRING & GUIDE ROD



LUBRICATE WITH GUN OIL

1. Dampen the utility brush with gun cleaning solvent and scrub the recoil spring and guide rod.
2. Using a cleaning patch, wipe down the recoil spring and guide rod. If the patch is not clean, repeat steps 1 and 2 until the patch remains clean.
3. Lightly lubricate the recoil spring and guide rod with a cleaning patch with a few drops of gun oil or lubricant.

WARNING: Avoid excessive lubrication. Over-lubrication can cause unburned powder and other debris to collect inside the firearm and prevent it from functioning properly.

WARNING: Never apply lubricants directly on ammunition. This may cause the powder in the cartridge to fail to ignite. The energy from the primer could push the bullet into the barrel where it may become lodged.

6.4 FUNCTION CHECK

Following cleaning and maintenance, it is recommended to check the function of the firearm.

1. Rack the slide rearwards and release. Make sure the slide moves freely. Remember not to ride the slide (pull back and release).
2. Without depressing the grip safety, pull the trigger in a safe direction. Make sure striker does not drop during this process.
3. Grip safety to fire; pull the trigger in a safe direction. Make sure striker drops during this process.

6.5 CHANGING THE BACKSTRAP

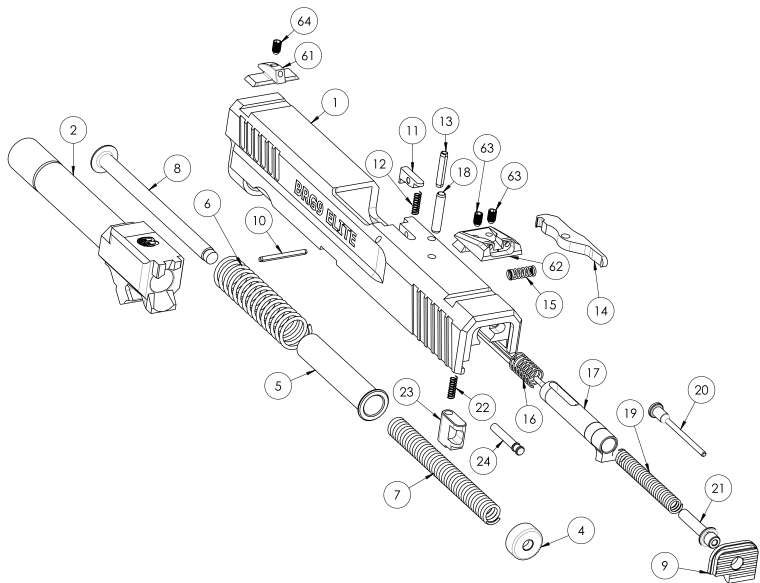
Your BRG9 Elite comes with three interchangeable backstraps sized small, medium, and large. The medium strap is installed from the factory. To change to a small or large backstrap:

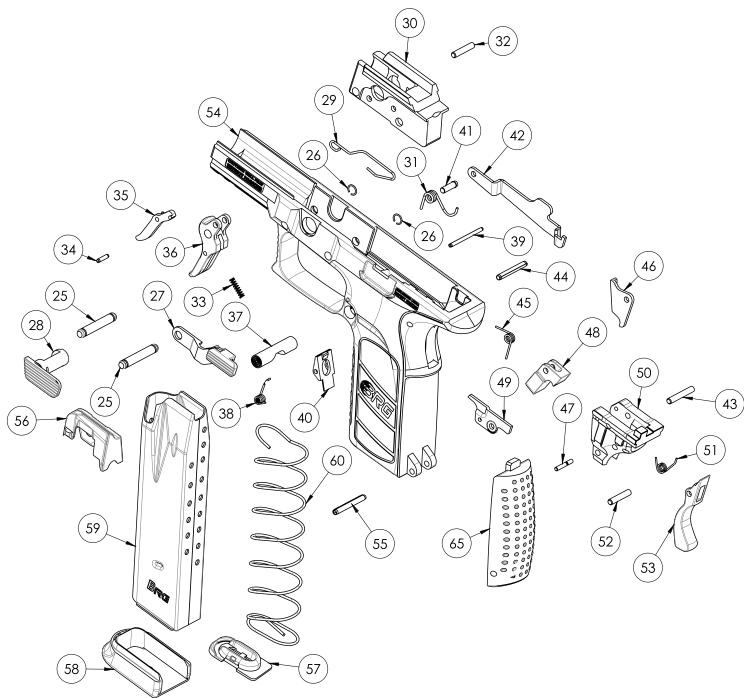
1. Ensure that the firearm is unloaded by removing the magazine and checking the chamber.
2. Once unloaded, close the slide.
3. Use a small punch to push the grip release pin in either direction. The pin must be removed completely.
4. Pull down on the backstrap to remove.
5. Insert the desired backstrap by fitting the tab on the strap into the slot on the frame below the grip safety.
6. Push the backstrap release pin back into the backstrap and frame using a small punch and lightly tapping with a hammer.



7. EXPLODED VIEW & PART LIST

7.1 BRG 9 ELITE EXPLODED VIEW





7.2 BRG9 ELITE PART LIST

1. BRG9001A – SLIDE 4"
BRG9001B – SLIDE 5"
2. BRG9002A – BARREL 4"
BRG9002B – BARREL 5"
4. BRG9004 – MAIN SPRING CUP
5. BRG9005 – RECOIL SPRING CUP
6. BRG9006 – SECOND SPRING CUP
7. BRG9007 – SECOND RECOIL SPRING
8. BRG9008 – RECOIL SPRING GUIDE ROD
9. BRG9009 – REAR SLIDE PLATE
10. BRG9010 – LOADED CHAMBER INDICATOR PIN
11. BRG9011 – LOADED CHAMBER INDICATOR
12. BRG9012 – LOADED CHAMBER INDICATOR SPRING
13. BRG9013 – EXTRACTOR PIN
14. BRG9014 – EXTRACTOR
15. BRG9015 – EXTRACTOR SPRING
16. BRG9016 – STRIKER DAMPENING SPRING
17. BRG9017 – STRIKER
18. BRG9018 – STRIKER RETAINING PIN
19. BRG9019 – STRIKER SPRING
20. BRG9020 – STRIKER STATUS INDICATOR
21. BRG9021 – STRIKER SPRING
22. BRG9022 – STRIKER SAFETY SPRING
23. BRG9023 – STRIKER SAFETY

24. BRG9024 – STRIKER SAFETY RETAINING PIN
25. BRG9025 – LOCKING BLOCK PIN
26. BRG9026 – LOCKING BLOCK SPRING
27. BRG9027 – SLIDE RELEASE LEVER
28. BRG9028 – DISASSEMBLY LEVER
29. BRG9029 – SLIDE RELEASE LEVER SPRING
30. BRG9030 – LOCKING BLOCK
31. BRG9031 – TRIGGER BAR SPRING
32. BRG9032 – TRIGGER PIN
33. BRG9033 – TRIGGER SAFETY SPRING
34. BRG9034 – TRIGGER SAFETY PIN
35. BRG9035 – TRIGGER SAFETY
36. BRG9036 – TRIGGER
37. BRG9037 – MAGAZINE RELEASE BUTTON
38. BRG9038 – MAGAZINE CATCH SPRING
39. BRG9039 – MAGAZINE CATCH PIN
40. BRG9040 – MAGAZINE CATCH
41. BRG9041 – TRIGGER BAR PIN
42. BRG9042 – TRIGGER BAR
43. BRG9043 – SEAR PIN
44. BRG9044 – REAR SLIDE PIN
45. BRG9045 – SEAR SPRING
46. BRG9046 – STRIKER SAFETY LEVER
47. BRG9047 – EJECTOR PIN
48. BRG9048 – SEAR

- 49. BRG9049 – EJECTOR
- 50. BRG9050 – REAR SLIDE
- 51. BRG9051 – GRIP SAFETY SPRING
- 52. BRG9052 – GRIP SAFETY PIN
- 53. BRG9053 – GRIP SAFETY
- 54. BRG9054 – FRAME
- 55. BRG9055 – GRIP RELEASE PIN
- 56. BRG9056 – MAGAZINE FOLLOWER
- 57. BRG9057 – MAGAZINE LOCKING PLATE
- 58. BRG9058 – MAGAZINE BASE
- 59. BRG9059 – MAGAZINE BODY
- 60. BRG9060 – MAGAZINE SPRING
- 61. BRG9061 – FRONT SIGHT
- 62. BRG9062 – REAR SIGHT
- 63. BRG9063 – REAR SIGHT SET SCREW
- 64. BRG9064 – FRONT SIGHT SET SCREW
- 65. BRG9065A – BACKSTRAP SMALL
BRG9065B – BACKSTRAP MEDIUM
BRG9065C – BACKSTRAP LARGE

8. PRODUCT REGISTRATION & WARRANTY

8.1 LIMITED LIFETIME WARRANTY

Congratulations on the purchase of your new BRG9 Elite. Pursuant to BRG's Limited Lifetime Warranty Policy, defects in material or workmanship associated with the firearm will be repaired without charge for the original purchaser as long as you own the firearm. This agreement is not transferable; its benefits apply only to the original purchaser. Firearm accessories are not covered under this policy.

8.1.1 LIMITATIONS OF WARRANTY

The BRG warranty will be void if any of the following occur:

- The product is not properly registered.
- The instructions in the Owner's Manual are not followed.
- Your BRG9 Elite firearm or any of its parts are altered or modified from their original state.
- Damage is caused by misuse, abuse, or improper maintenance.
- Your BRG9 Elite firearm is disassembled beyond the instructions in the manual.
- Reloaded, remanufactured, or hand-loaded ammunition or ammunition of a different caliber than your BRG9 Elite firearm is used.
- BRG9 Elite firearms used for range rentals or other similar programs are not eligible.

To the full extent permissible by applicable law, BRG and their employees, agents, distributors and partners do not make, and are not entitled to make, any warranty of any kind, express or implied, with respect to the BRG9 Elite firearm, INCLUDING WITHOUT LIMITATION ANY WARRANTY OF MERCHANTABILITY OR FITNESS FOR ANY PARTICULAR PURPOSE. The only limited warranty provided is from BRG, pursuant to terms and limitations stated herein. Nothing contained herein shall be interpreted as an implied or expressed warrant on behalf of BRG beyond the terms above.

8.2 PRODUCT REGISTRATION

Please register your firearm with BRG within 30 days of purchase. Proof of purchase, including a receipt or invoice, must be provided with your registration.

You can register your BRG9 Elite online at:

<http://brgdefence.com/product-registration>

8.3 PRODUCT SUPPORT

Please visit brgdefence.com for all support needs.

[This page intentionally left blank.]



BURGU METAL SANAYI ve TICARET LTD.STI.

Gullubaglar Mah. Kahramanlar Cd.NO: 3/1

34906 Pendik / ISTANBUL / TURKEY

BRG Owner's Manual, version 1.01

© 2021 BRG. All rights reserved.